



2 Vent D'Ete La Rue de l'Etocquet  
St. John, Jersey, JE3 4AE

**£2,225,000**





## 2 Vent D'Ete La Rue de St. John, Jersey, JE3 4AE

Nestled in the serene countryside of St. John this newly built Four-bedroom house is a rare gem waiting to be discovered. Boasting a high specification finish by the esteemed local builders, Ashbe Construction, this property exudes quality and craftsmanship.

As you step inside, you are greeted by bespoke hand made solid oak feature staircase, The Mackintosh kitchen with center island and Miele appliances is designed by the Kitchen Studio and is the hub of the home. The great size lounge with media wall and inset feature fire offers ample space for entertaining guests or simply unwinding after a long day, Four generously sized bedrooms all with en-suite bathrooms and a great size family room providing plenty of room for a growing family or accommodating guests.

The garage and parking for three cars make coming home a breeze, with no need to worry about parking after a long day.

The wraparound private garden is perfect for enjoying the fresh country air, hosting summer barbecues, or simply relaxing in the tranquility of nature. The spacious rooms throughout the house offer endless possibilities for creating your ideal living space, making it a canvas ready for your personal touch.

Situated close to St. John's village, this property offers the best of both worlds - a peaceful country location with the convenience of amenities just a stone's throw away. Whether you're looking for a peaceful retreat or a spacious home for your family to grow, this property ticks all the boxes. Don't miss out on the opportunity to make this house your home sweet home.

Hallway

Cloakroom

Family room

Lounge

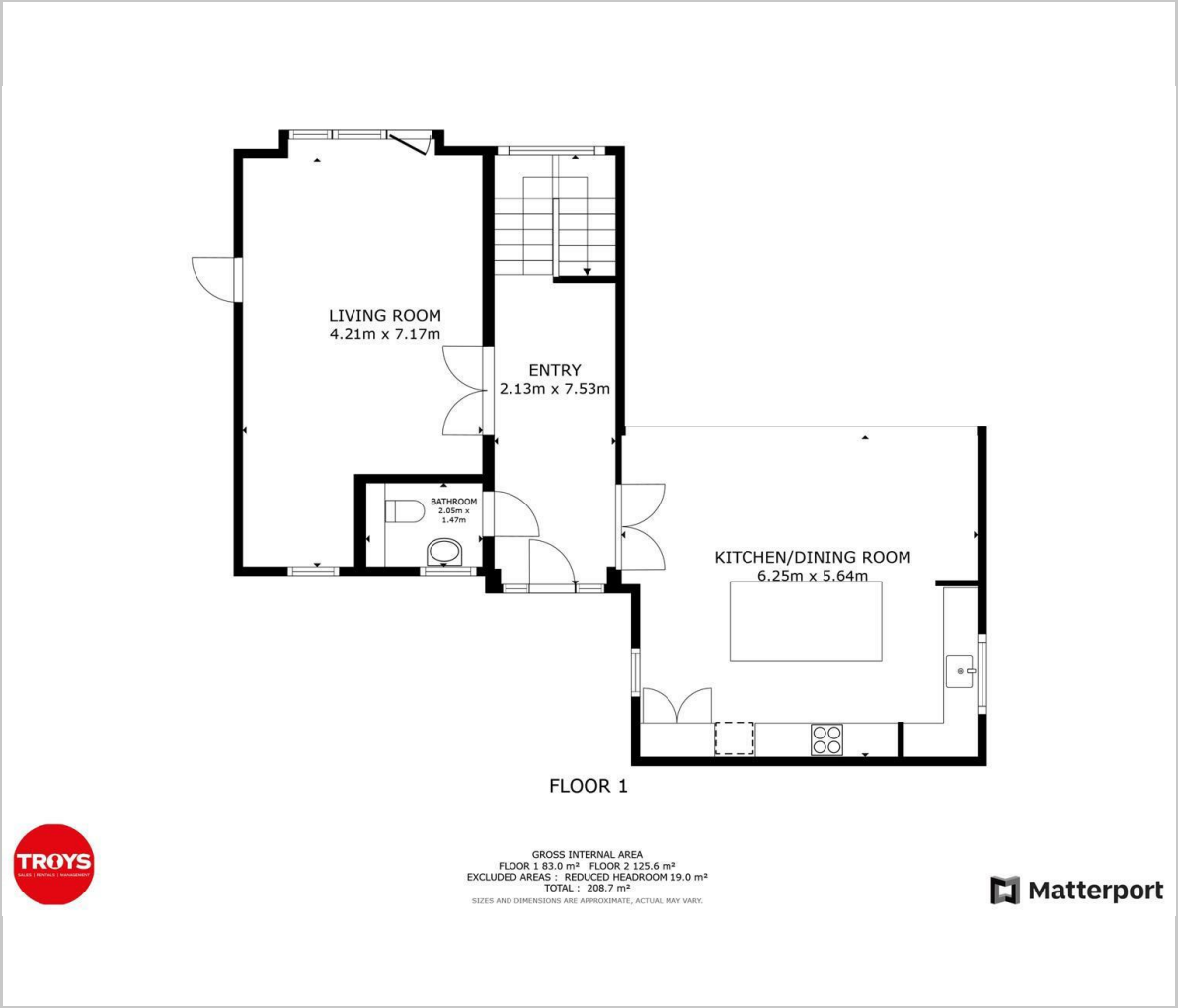




Kitchen  
First floor  
Master bedroom  
Balcony  
En-suite  
Walk in wardrobe  
Bedroom 2  
En-suite  
Bedroom 3  
En-suite  
Bedroom 4  
En-suite  
Exterior  
Garage  
Parking  
Services



Floor Plan



Viewing

Please contact our Troys Estate Agency Ltd Office on 01534 607070 if you wish to arrange a viewing appointment for this property or require further information.

These particulars, whilst believed to be accurate are set out as a general outline only for guidance and do not constitute any part of an offer or contract. Intending purchasers should not rely on them as statements of representation of fact, but must satisfy themselves by inspection or otherwise as to their accuracy. No person in this firms employment has the authority to make or give any representation or warranty in respect of the property.

10 Sand Street, St Helier, Jersey, JE2 3QF  
Tel: 01534 607070 Email: duty@troysjsy.com

Area Map



Energy Efficiency Graph

